

Assembling instruction  
for  
1/50 Salvage Boat

# CHIBA STAR



## SPECIFICATIONS

Reduced Scale	: 1/50	Steam Engine	: T3DR or T2GR
Length Overall	: 1,200mm	Boiler	: B3 or B2G
Breadth Extreme	: 260mm	Radio Control	: 3-4 CH
Height	: 450mm		

SAITO SEISAKUSHO CO., LTD.  
22-7 Tokagi 3-Chome, Ichikawa-Shi,  
Chiba-ken 272-0024, Japan  
TEL: 047-378-4156 FAX: 047-378-4155  
<http://www.saito-mfg.com>

Let us express our sincere thanks for your favouring Saito Seisakusho, Ltd., particularly for your purchase of the "CHIBA STAR", Salvage Boat.

For your convenience, please prepare the following tools and adhesives before assembly.

Tools : Scroll Saw, Small Plane (Balsa Plane, etc.), Cutting Pliers, Nipper, Hair Dryer, Soldering Iron, Pincette, Small Electric Drill, Files (Flat type 10 m/m approx., Round type 3 m/m and 8 m/m approx.), Sandpapers (#240 & 80), Compass, Metal Rod for fittings (6 m/m x 200 m/m, with 5 m/m depth of the top cut by metal saw).

Adhesives : Necessary adhesives are indicated as follows:-

[1] Cyano-Instant Adhesive (About 20 grams)

Please use thin type only. The delicate point is a small quantity and flat a contact surface as much as possible. If you apply a large quantity, wipe it with a cloth. At this time, an instant cementation is available. This is good for temporary houses and veneer sections if you use an accelerant. so that assembly time is largely saved.

[2] Epoxy Adhesive (5 minutes type) (About 80 grams)

Use a hair dryer and induce with wire, etc., for beautiful glueing with a small quantity. Glueing time is faster. Do not use a hair dryer for pile arrangement.

[3] Epoxy Adhesive (30 minutes type) (About 35 grams)

Use glueing with the Hull and the Decks. Do not use a hair dryer. Surrounding temperature (20°C over) is preferable in winter.

Coating

Spraying ..... Lacquers\* : White 1/5 litre, Green 1/5 litre, Black 1/5 litre.

Red ----- Small quantity  
Blue ----- " "  
Yellow ---- " "

Brushing ..... Plastic colours : Green, Mahogany, Gray & Black Iron.

Cashew Paints : For clear and inside.

Cashew Paint No.51 : For Deck Planks and Doors.

\* Lacquer Primer, Lacquer Surfacer 500 grams and Retarder.

Putty --- Small quantity, Thinner --- 2 litres, Waterproof Abrasive Papers --- #400 (3 Sheets) and #800 (1 Sheet) Sandpapers.

3T Linden Veneers and die parts are concerned, do not use the back sides, which are clearly numbered, as the surfaces.

## 1. Hull

Modify the hull in accordance with the drawing, specially broadside line, with files. File the hull inside (Mainly glue points) with sandpapers. Glassfiber should be stripped 1 sheet by sandpaper before glueing. Just same as soldering and one day is available. Also, modify the thickness of the hull inside sections, which are above the decks, with files. Use compass and make 25 m/m line in the hull **inside** from the broadside top. Next, put together the top of Hinoki (wood material 5 m/m) to the line and fasten it with clips. Make sure right and left, sizes, etc., before glueing. Use [1] for temporary glueing and lay the hull so as to glue with [2] from the backside of Hinoki (wood material 5 m/m) by hair dryer. Make various holes such as stern tube, rudder, etc., in accordance with the drawing. Engine should be fixed on engine bed (4) (See drawing) and fit on the ship bottom. Then, attach universal joint and (C3) to (C6) should be fixed to stern tube for easy revolution. And only (C5) should be glued to the stern tube with [1]. Take off (C3) and insert (29) while (C3) is attached. And a point, where allows easy revolution, should be glued with [1]. Attach propeller joint to propeller shaft and the joint is allowed to move about 1 m/m by adjusting the engine bed. (1) (2) (3) are temporarily fastened by [1]. At this time, do not glue (4). Glue with [2] without any crevices in the surroundings. Attach engine, boiler and burner to the engine bed (See drawing). Coat cashew paint on the bed. Make holes, which are fitted to Servo motor on its fitting board (118), and also drill for engine throttle lever (boiler and regulator) and engine reverse lever rod.

## 2. Deck

First, (23) to (28) and (30) are fixed to the hull by clamps, etc., for deck (3) and glue temporarily with [1]. Then, glue with [2]. Use [3] in case of glueing to the hull. Fix with gum tape, etc., attaching supporters to the decks because they are warped. Next, glue bulwark section on the decks. Coat (B) Primer (Caution: Inflammable and volatile liquid), which is packed in the kit, to ABS side and glue with [3] within 20 minutes. Glueing of decorative deck planks starts from the surroundings and glue the center. From the center, glue with [1] toward right and left sides. Round off the corners by sandpapers (See drawing). Stay should be painted by white lacquer using a brush after hull paint and glue with [1] (See outer box). Place upper deck and house on the hull and glue assembly part at the designated positions with [1]. Ventilator, funnel and other small parts are glued with [1] after coating. After glueing of [1] for ventilator and funnel, glue them again from the back with [2]. After coating of the upper deck house, glue decorative decks on the upper decks.

### 3. Coating

The hull should be filed with waterproof abrasive paper #400 so as to clean the outside damages. The decks are covered with paper tape, etc., for masking. Coat lacquer primer twice to whole outside and surfacer in 3 times. After dry well in each time, file with waterproof abrasive paper and fill up dents by putty. Refer drawing and attach paper tape to the waterline and cover the bottom with newspapers in order to coat Black lacquer in 3 - 4 times. On the other hand, cover the upper part and coat the bottom of waterline with light-green. After dry well, small parts are glued with [1], however, pay your attention that the paint will melt by extra adhesives. Gunwale small windows are fixed with [1] and paint them (insides) with light blue without any hole. White lacquer is used for handrails and tension wires. Coat cashew #51 for decorated decks and doors. Coat your favorite colour of cashew paint to the hull inside because it is not damaged by alcohol. Refer outer box for funnel and coat white lacquer on the upper deck house. Funnel is concerned, paint red at medium section and paste your initials. In case of brushing of lacquers, do not use thinner but add retarder 1/5 approx., for beautiful coating. Adjust retarder for lacquer thickness.

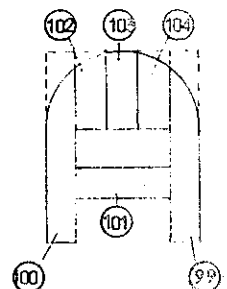
### 4. Outfit

After screw of tension wire fitting (231), wire should be passed through spring and coil the copper wire (Antenna wire) (246) in 4 times for glueing with [1]. Attach the spring to the fitting and also hook on the opposite side. Then, hook the spring wire and pull it about 3 m/m for coiling with the copper wire which is fixed by [1]. Make 1.1 m/m handrail fitting holes with drill and pass wire vertically for fixing with [1]. Also, glue with [1] for the wire and support balls. Solder antenna wire to (272). Also, solder copper wire (246) to (273) from the back side of (67) and stretch it from the back post to the front mast.

Each Lamp ----- For lighting, you can use small bulbs and luminous diodes.

Front Mast ----- After glueing (99) to (105) with [2], assemble them as per drawing.

Wire between (103) and (101) for lighting after the bulbs are attached in lamps.



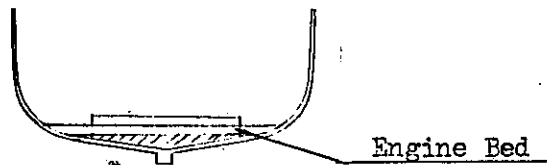
Back Post

----- After glueing (89) to (91) with [1], Back post (249) is temporarily glued to (65) & (66) with [1] and also glue with [2].

At this time, be careful about right angle and parallel. Meet (89) to (91) with (249) by [1] and glue with [2].

### 5. Ballast

In operating condition, (water and alcohol are filled), set the ship's water line placing a lead, etc., in the ship.



### 6. Navigation

Lubricate every part of the engine and stern tube oil hole. Pour regular water and alcohol into the boiler and the burner while the ship should be in a horizontal position. After ignition of the burner, adjust the needle valve by outdoor temperature. First, check the sailing conditions within 10 - 20 meters and do not sail for a long distance. Burner sound is a key point and return the ship at once if the sound is stopped. In summer, the burner tank is overheated because of high temperature so that, in this case, close the needle valve accordingly. On the other hand, open it widely during low temperature. Again, burner handling is the most important factor and needle valve standard position is 1/4 turn. Bon Voyage !

Part List

<u>Part No.</u>	<u>Description</u>	<u>Quantity</u>	<u>Remarks</u>
1-3	Engine Bed Fitting Board	1 ea.	
4	Engine Bed	1	
5-121	Hull Parts	1 ea.	Veneer, die cut
122	" "	4	Hinoki pole 5 x 5 x 900 m/m
123	" "		Hinoki pole 4 x 4 x 900 m/m
124	" "		Hinoki pole 3 x 3 x 900 m/m w/cut
125	Step Side Board		
126	" Foot Board		Veneer, 1T x 5
127	Deck Plank	19	" , 1.5Tx8x600
128	Door		Balsa, 1.5T
129	Loop Antenna Supporter	1	Hinoki Round Pole
130-133	Shipway Parts	1 ea.	Veneer, 9T
200	Hull	1	FRP
201	Funnel	1	FRP
202	Hull Part Materials		ABS 3 x 3
203	" " "		" 1T x 25
204	" " "		" 1T x 10
205	" " "		" 1T x 6
206	" " "		" 1T x 3
207	Bollard	10	Alum. 9 m/m x 10
208	Chain Hole	2	Brass 8 " x 3
209	Chain		For Anchor and Handrail, 700L
210	Capstan	3	Alum. 21 x 23
211	Bollard	1	" casting
212	Flag Pole Base	1	" "
213	Broadside Window	10	Brass, 12 x 1
214	Overflow Ring	6	" , 12.5 x 3
215	Anchor	2	Antimony casting 20 x 18
216	Guardrail Supporter	49	Brass, 2.5 x 25
217	Handrail Supporter	39	" , 2.5 x 9
218	Round Window (Medium)	32	" , 12 x 2
219	" " (Large)	2	" , 16 x 2
220	Square "	27	" , 18 x 14
221	Compass	1	Alum. 13 m/m
222	Compass Stand	1	" 13 x 25
223	" " Base	1	" 17 x 5
224	Soft Iron Ball	2	" 6 x 6
225	Searchlight	2	Brass
226	Searchlight Supporter	2	" , 4 x 30
227	" Flange	2	Alum. 9 x 10
228	Door Hinge	12	Brass, 2 x 6
229	Lamp	7	" 8 x 11
230	Mast Spar	1	"
231	Fitting	18	"
232	Spring	7	Stainless Steel 3 x 15
233	Wire		

234	Ventilator	2	Antimony casting
235	" Stand	2	Alum. 15 x 65
236	" " Base	2	" 21 x 4
237	Whistle	1	Brass
238	Boat Davit Support	4	" , 6 x 45
239	" "	4	Alum. 4 x 80
240	Pulley	17	Plastic
241	"	4	Alum. 5 x 4
242	Rope	4 m.	Cotton Thread
243	Motor Boat	1	Plastic
244	Boat	1	"
245	Boat Bollard	4	Alum. 6 x 13
246	Antenna Wire	1	0.3 x 1.3 m.
247	Loop Antenna	2	Brass, 1.5
248	Mast Ventilator	2	Alum. 24 x 12
249	Aft Post	2	" 13 x 260
250	Lighting	2	" 19 x 13
251	Pivot	1	Brass
252	Bracket	1	"
253	Beam A	1	Alum. 5 x 60
254	" B	1	" 7 x 130
255	" C	1	" 5 x 60
256	Pivot Fitting Screw	1	Brass, M3
257	" " Nut	2	" M3
258	" Bolt	1	" M3 x 12
259	Bracket Bolt	2	" M2 x 4
260	Pulley	1	"
261	Hook Bolt	2	" M2 x 5
262	Spacer	1	" 3 m/m
263	Hook Nut	2	" M2
264	Motor	1	Alum. 12 x 18
265	Drum	5	" 10 x 14
266	Spacer	2	" 6 x 2
267	Frame	1	Brass
268	Frame	1	"
269	Frame Fitting Screw	4	" bolt, M2 x 7
270	" " Nut	4	" M2
271	Towing Beam Stay	2	" 3 x 20
272	Connector	1	Phosphor Bronze
273	"	1	" "
274	Setting Pin	4	
275	Rudder Shaft	1	Brass, 4 x 120
276	" Shaft Receiver	1	" 4 x 25
277	Arm	1	" 6 x 30
278	Fitting Materials		" wire 2 m/m
279	" "		" " 1.5 m/m
280	" "		" " 1 m/m
281	Engine Bed Fitting Screw	6	
282	Life Buoy	4	Plastic

T2GR Steam Engine Control Set

300	Bracket A	1	Brass Screw
301	Shaft	2	Stainless Steel
302	Crank	4	Brass w/screw
303	Adjuster	3	
304	Ball Joint	9	w/screw
305	Control Rod	8	Brass wire, single screw 2x35
306	Control Rod	2	Brass wire, Double screw 2x35
307	" "	1	Brass Pipe, 3 m/m
308	" "	1	" "
309	" "	1	" "
310	//////		Missing No.
311	//////		" "
312	Control Rod	1	Brass Pipe 6x325
313	//////		Missing No.
314	Stopper	2	Brass w/screw
315	//////		Missing No.
316	//////		" "
317	Connecting Pipe	1	Rubber Tube 3.4"x1.000
318	" "	1	" " 5.0"x 500

T3DR Steam Engine Control Set

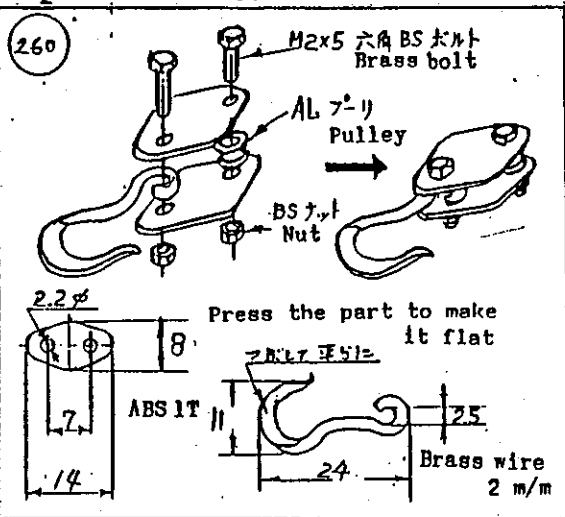
300	Bracket A	1	Brass screw
302	Bell Crank Assembly	1	w/Nylon & screw
303	Adjuster	2	
304	Ball Joint	6	w/screw
305	Control Rod	2	Brass wire, Single screw 2x35
305A	" "	2	" 2x125
305B	" "	2	" 2x80
306	" "	1	Double screw, 2 x35
307	" "	1	Brass pipe 3x130
318	//////		Missing No.
319	Control Rod	1	Brass Pipe 3x130
320	" "	1	" " 4x230
321	Exhaust Pipe	2	" " 4x50
322	Connecting Pipe		Rubber Tube 3.4"x1.000
323	//////		Missing No.
324	Connecting Pipe		Rubber Tube
325	//////		Missing No. 2.3"x 850





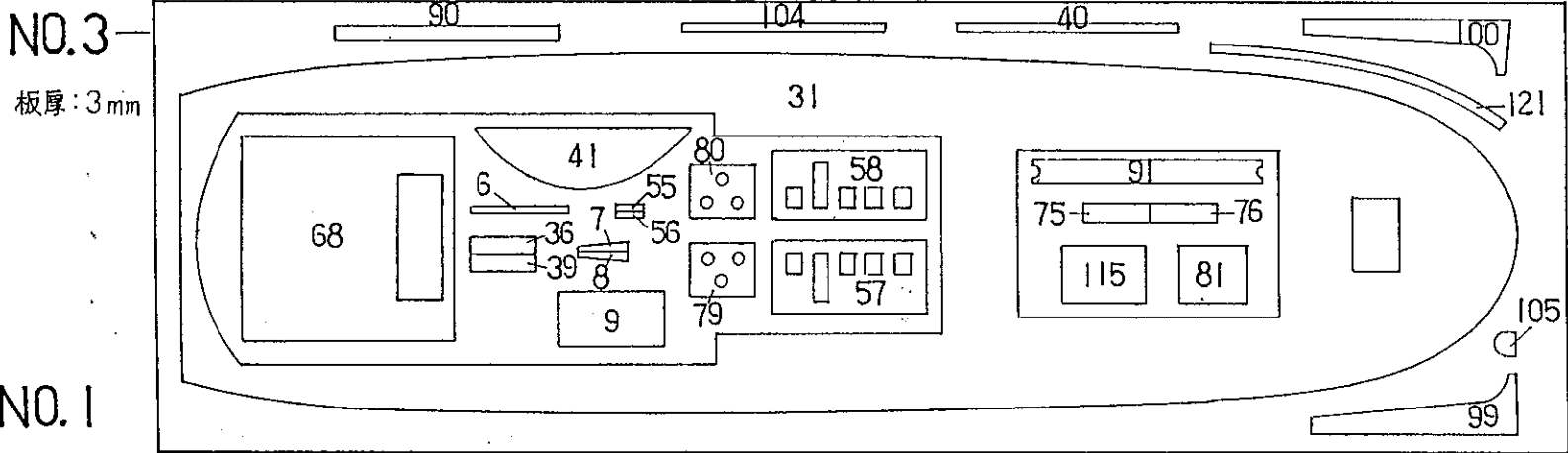
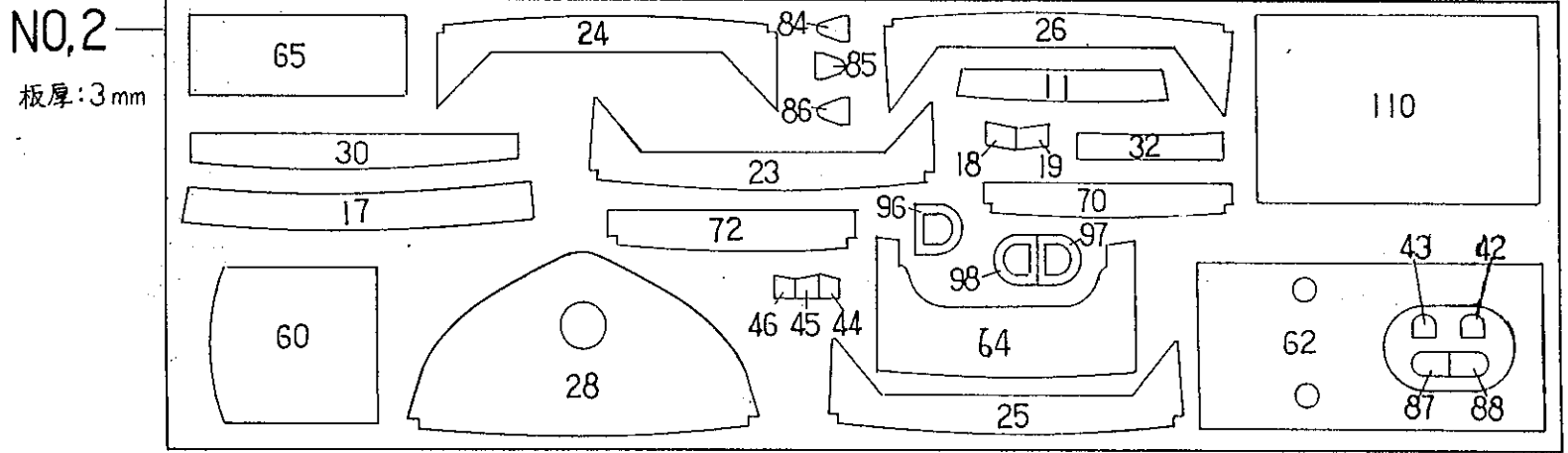
Amendment 1

First, assemble it as per drawing. Cement (23) (24) (25) (26) (27) (28) (30), etc., on the deck in accordance with the blueprint and (122) should be glued. At this time, epoxy adhesive should be applied completely as per sectional drawing. Next, (32) (33) (34) (35) should be glued previously as per drawing and glue to the deck from the back with epoxy adhesive. (36) (37) (38) (39), (18) (19) (20) (21) (22) are glued with the same manner as (32). When you glue stem deck (5) to (12), reinforcements are required as per drawing and are made from the scrap diecut wood. Then, fix up the assembly, which is glued and assembled, as per drawing. At this time, confirm symmetry of the both gunwals and warp of the deck, etc., from back view and scrape off the unnecessary parts. Use [2] for gaps. More, tie the hull at places for fixing of the deck. Pay your attention to the sides, which should not be zigzagged, from back view. After cementation of the hull and the deck, lay the hull and glue to the lower part of (122) with [3] as per sectional drawing.

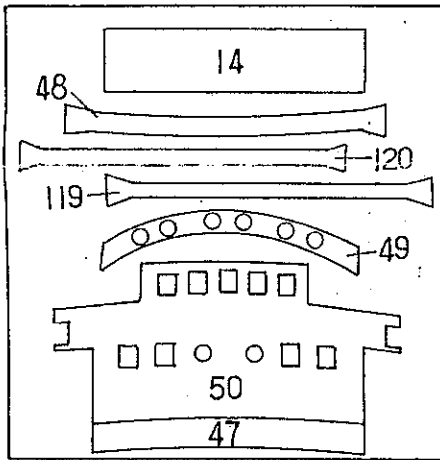


チバスター 木製部品番号表

お客様にお願い : 部品を打ち抜く前に、この部品番号表により、各部品に番号を記入して下さい。組立の際は、部品番号を記入した面を、うら側にして下さい。



**NO.1**  
板厚: 2mm



**NO.4**  
板厚: 3mm

