

Thank you for purchasing the CIU-3.

The CIU-3 is a USB interface for communications between Link-supported devices (such as a S.BUS servo , Gyro and ESC) and Windows computer.

Notes

- Please read this manual thoroughly before using your CIU-3.
- Store this manual in a safe place where it can be accessed at any time.
- Reproduction of all, or part, of the contents of this manual without prior written permission is prohibited.
- The contents of this manual are subject to change without prior notice.
- The contents of this manual should be complete. ; Please contact us if you find errors or points that are unclear.
- Futaba will not be responsible for the results of use of devices by the customer.

***A PC-LINK adapter (double extension cord K500) is supplied with the CIU-3.**

Specifications

(Specifications and ratings are subject to change without prior notice accompanying technological developments.)

- Interface: USB Rev2.0 compliant
- USB connector: USB Series A connector
- Operating voltage: 5.0V \pm 0.2V (USB bus power)
- Current drain (At connection, idle): 5.8 \pm 1.7mA
- *The PC must have a USB port (Type A).
- Operating environment: Temperature -10 ~ +45°C
- Dimensions: 18.2 x 56.5 x 9.0 mm
- Weight: 7.5g
- Applicable OS: Windows Vista/7/8/8.1/10

Driver software and Link programs must be installed.

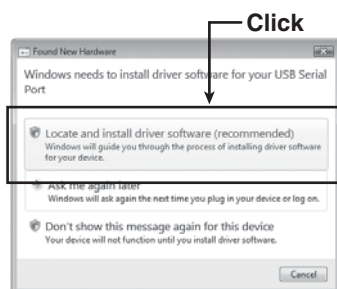
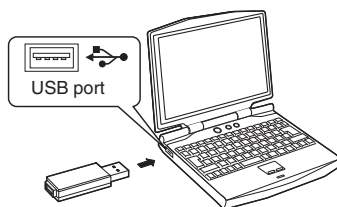
- For communication and setting, Link programs corresponding to each device must be installed.
- Install the latest version of Link programs available on the dealer's website because old Link programs are incompatible with CIU-3.

Connecting and disconnecting the PC and CIU-3

Connection

- *Make sure that your PC is connected the internet.
- *Please update Windows before connecting the CIU-3 to the PC.
- *To use the CIU-3, driver software must be installed.
- *When using the CIU-3, please disconnect the other USB Serial Port devices from the USB port on your PC.

1. Turn on the PC power.
2. Connect the CIU-3 to the USB port of the PC.
3. When the CIU-3 is first connected to the PC, Once the CIU-3 is connected to the PC, download the recommended driver software Using Windows Vista, the "Found New Hardware Wizard" window appears on the screen. Click "Locate and install driver software".



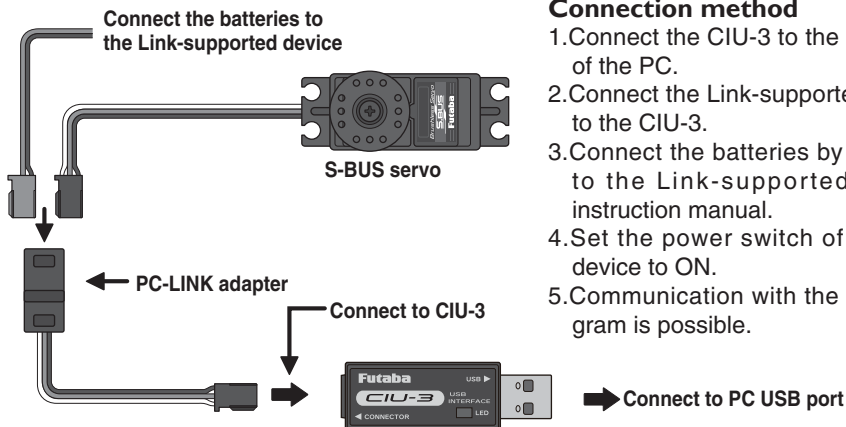
Disconnection

The CIU-3 can be disconnected from PC even while the Power is on. However, the CIU-3 should not be disconnected while it is communicating with a Link-supported device.

Example of connection to Link programs supported device

(The figure below is an example of connection to an S-BUS servo.)

When using the CIU-3, please disconnect the other USB Serial Port device from the USB port on your PC.



Connection method

1. Connect the CIU-3 to the USB port of the PC.
2. Connect the Link-supported device to the CIU-3.
3. Connect the batteries by referring to the Link-supported device instruction manual.
4. Set the power switch of the Link device to ON.
5. Communication with the Link program is possible.

Usage Precautions

⚠ WARNING

- ⊘ Do not disassemble the CIU-3. Do not open the CIU-3 case.

Opening the case may damage the PC board. In this case, PC assembly replacement or repair will become impossible. There is also the danger of fire and electric shock.

- ⊘ Do not expose the CIU-3 to water or other liquids. Do not touch the CIU-3 when your hands are wet.

Water droplets entering the CIU-3 may cause trouble. There is also the danger of fire and electric shock.

⚠ CAUTION

- ⊘ Do not drop or expose the CIU-3 to strong shock.

It may cause trouble.

- ⊘ Do not set anything on top of the CIU-3.

It may cause trouble.

- ⊘ Do not touch the connectors with your hands. Also, do not connect a dusty or dirty connector.

It may cause trouble.

- ⓘ Handle the PC and peripheral devices in accordance with the instruction manual and cautions and warnings given in the instruction manual of each product.

Special Markings

For safety's sake, pay special attention whenever you see the marks shown here.

Symbol: ⊘ : Prohibited

ⓘ : Mandatory

Mark	Meaning
⚠ WARNING	Procedures which may lead to a dangerous condition or cause death or serious injury to the user if not carried out properly, or procedures where the probability of superficial injury or physical damage is high.
⚠ CAUTION	Procedures where the possibility of serious injury to the user is small, but there is a danger of injury, or physical damage, if not carried out properly.

*Windows is registered trademark of Microsoft Corporation.

<When requesting repair>

Reread manual before requesting a repair. If the problem continues, contact your local Futaba dealer. (HCA's Service Center.)