

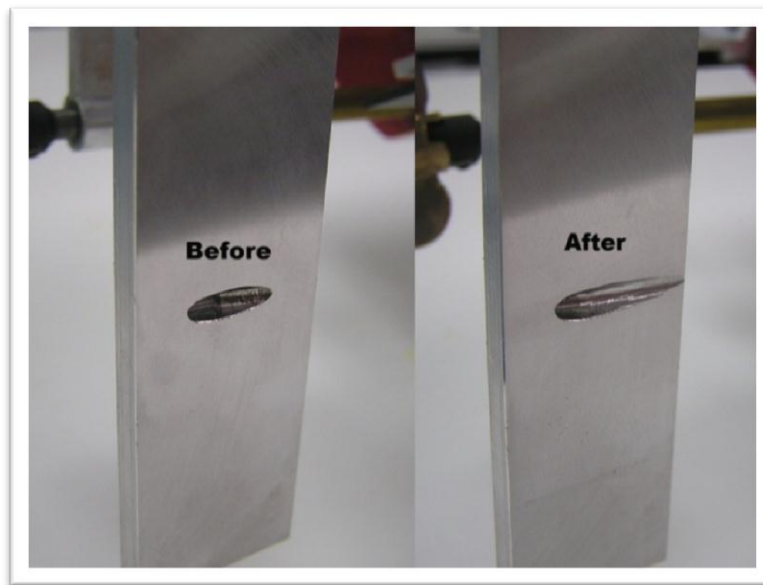
AquaCraft Revolt 30 FE Mono Tips!

When preparing your Revolt 30 FE Mono:

1. The tape used to secure the hatch during shipping may leave a residue. This residue can be easily removed using Goo Gone® or similar adhesive remover.
2. The hook and loop used to secure the motor controller and receiver (Receiver Ready Model) may have come loose in the boat. Fortunately, the adhesive is still active and the components can easily be re-positioned to the hull.

Performance tips:

1. To secure the battery, always use the provided straps along with plenty of hook and loop material on the main power batteries.
2. Sharpen the hardware and read the manual fully to achieve maximum performance!
3. Use a rotary tool or round file to elongate the water inlet hole towards the front edge of the rudder blade.



Thank you for choosing AquaCraft!